

220V 3500K Light Bar Module Efficient Heat Dissipation For Indoor Planth Flowers

Our Product Introduction

Basic Information

- Place of Origin: Shenzhen China
- Brand Name: newspectrum
- Model Number: LensG-50W
- Minimum Order Quantity: 100pcs
- Price: Negotiable
- Packaging Details: Antistatic bag, boxes in carton.
- Delivery Time: 5-8 work days
- Payment Terms: L/C, D/A, D/P, T/T, Western Union, MoneyGram
- Supply Ability: 500pcs/day



Product Specification

- Product Name: 50W Grow Light Board
- Power: 50W
- Voltage: 110V / 220V
- CCT: 380-840nm/ 3500K / 6000K/380-840nm +3500K
- Surge Test: >4000V Passed
- Warranty: 2 Years
- Highlight: Efficient Heat Dissipation Light Bar Module, Indoor Planth Flowers Light Bar Module



More Images



for more products please visit us on cobledchip.com

Product Description

Newspectrum 220V 3500K Full Spectrum LED Plant Lamp For Indoor Planth Flowers Greenhouse Seedlings Lens Grow Light 50W

Specifications:

1. Power: 50W
2. Voltage: AC 110-130V / 220-240V
3. CCT: 380~840nm (Full spectrum) / 3500K (Warm white) / 6000K (Cold white) / 380~840nm+3500K
4. CRI: 85
5. WLP Efficiency: 90lm/W
6. Surge test: >4000V passed
7. Product size: 170mm*114mm*1.6mm
8. Packing size: 185*134*50mm
9. GW: 0.3kg
10. Plug Type: EU / US plug (Optional)
11. Warranty: 2 years

Features:

【HEAT DISSIPATION】

The light board adopts high-performance material aluminum substrate, which has a large heat dissipation area, efficient heat dissipation, and effectively extends the service life.

【ENERGY SAVING & HIGH EFFICIENCE】

High brightness, low light attenuation, low heating, safe, durable, energy saving and environmental protection.

【EASY TO INSTALL】

Easy to install and operate. Mini light weight

【PRODUCT FUNCTION】

Prevent overgrowth, increase freshness and beauty, promote growth and improve quality, accelerate ripening by sunlight, and market early

【WIDELY USED】

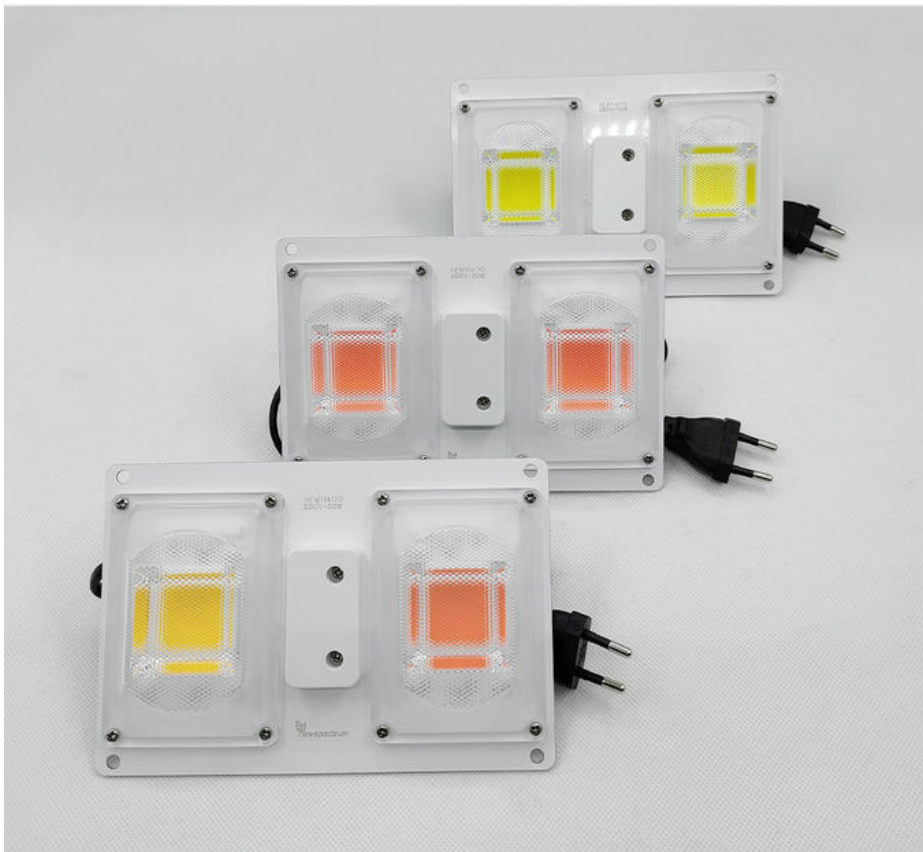
Suitable for all indoor growing environment: grow tent, grow room, best for growth and bloom stage. Popular in hydroponics, greenhouse, indoor gardening, pipeline cultivation, potted plants and other indoor environment.

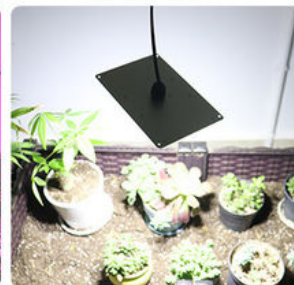
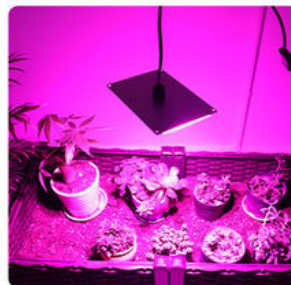
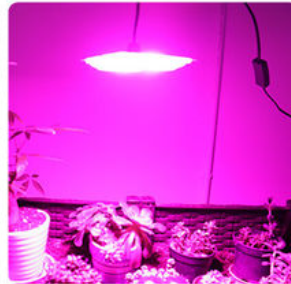


Suitable for all kinds of plants



Real Show



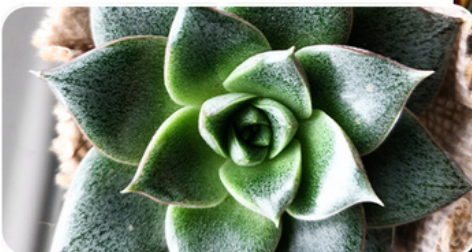


Suitable for all kinds of plants



For Vegetable

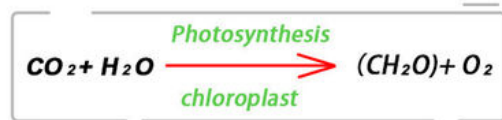
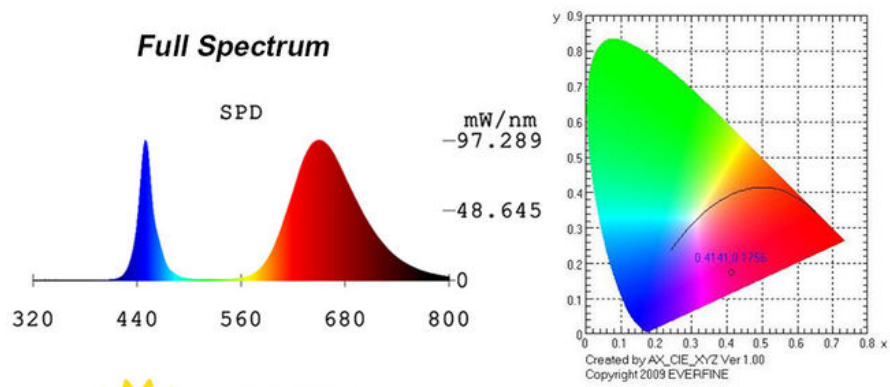
For Flowers



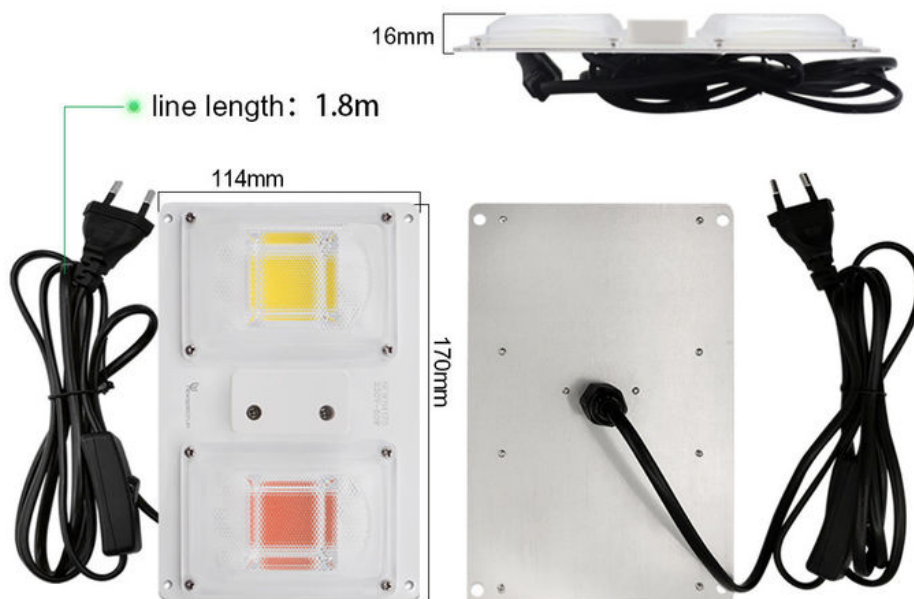
For Succulents

For Fruit

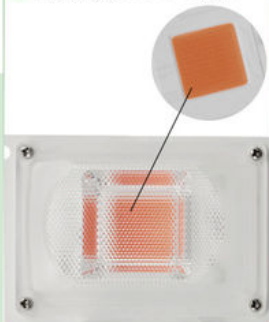




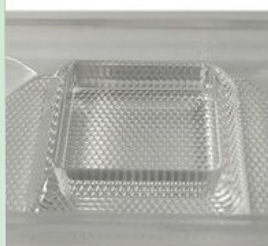
Product listing



● Highlight COB chips



● PC lens waterproof IP65
More uniform light



● Dust & Moisture
Electric shockproof



● Waterproof interface with
rubber plug



● ON / OFF Switch



● Plug EU / US (Optional)



Package



*Grow light*1*



*Plug EU / US*1*



*Hanger kit*1*

We greatly appreciate your 5-star feedback.

We highly appreciate your reviews as they allow us to offer better services to you. Your satisfaction and positive feedback are very important to our business's development.

If you are not satisfied with your purchase, please contact us before leaving neutral or negative feedback or opening a dispute. We will try our best to solve any problems you may have.



Shenzhen Colighting Ltd



+86-18926589891



bon@colighting.com



cobledchip.com

3rd Floor of building 1, No.5 of Shijing Industrial Park, Pingkui Road, Pingshan district, Shenzhen, China, 518118