

20W 30W 50W Cob AC LED Module 3000k Great Heat Dissipation Environmentally Friendly

Our Product Introduction

Basic Information

- Place of Origin: Shenzhen China
- Brand Name: newspectrum
- Model Number: NEW 7440
- Minimum Order Quantity: 100pcs
- Price: Negotiable
- Packaging Details: Antistatic bag, boxes in carton.
- Delivery Time: 3-5 workdays
- Payment Terms: L/C, D/A, D/P, T/T, Western Union, MoneyGram
- Supply Ability: 100000pcs/day

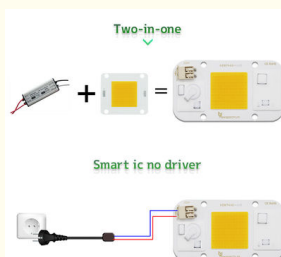


Product Specification

- Size (mm) : 40*74*1.6mm
- Luminous Flux: 2000-5000lm
- CCT: 3000k/6000k/Full Spectrum
- Working Temperature: -20°C-60°C
- Power: 20W/30W/50W
- PF: >0.9
- Product Name: AC LED Module
- Type: COB LED
- Lighting Solutions Service: Lighting And Circuitry Design
- Warranty: 3 Years
- Highlight: 20W AC LED Module, AC LED Module 3000k, Great Heat Dissipation Ac Cob Led



More Images



for more products please visit us on cobledchip.com

Product Description

Product Description:

AC LED Module with CRI>80 000 Hours Lifespan -20°C-60°C Working Temperature

AC LED Module is a type of LED cob chip module powered by AC220-240V, its beam angle is 120°, lifespan is up to 50,000 hours and power factor is more than 0.9. It is designed with a high-quality led cob chip with 20W/30W/50W power options for various lighting purposes. This AC Cob Led combines efficiency, reliability and durability in one product, making it the perfect choice for your lighting needs.

Features:

Product Name: AC LED Module

Power Factor (PF): >0.9

Color Temperature (CCT): 3000k/6000k/Full spectrum

Size: L74*W40*H1.6mm

Input Voltage: AC110V/220V

Lifespan: 50,000 Hours

Technology: AC COB LED

Applications:

Newspectrum's AC LED module is the perfect choice for any commercial or residential lighting application. This module is designed with Cob Led Chips and Ac Cob Led, providing a lighting solution that is reliable, durable, and energy efficient. It is made of aluminum and PC and has a size of L70*W40*H1.6mm. With a Color Rendering Index (CRI) of over 80, and a Correlated Color Temperature (CCT) of 3000k/6000k, this module offers excellent color reproduction and brightness. This LED module is also environmentally friendly, as it is free of mercury and other hazardous chemicals. The led cob chip has a long life span, making it a great investment for any lighting project.

Customization:

Customized Service for AC LED Module from newspectrum

newspectrum provides customized service for AC LED Module with **Ac Cob Led, led cob chip, Ac Cob Led Module**. The product has the following features:

Brand Name: newspectrum

Place of Origin: Shenzhen China

Working Temperature: -20°C-60°C

Power: 20W/30W/50W

Lifespan: 50,000 Hours

Support and Services:

AC LED Module Technical Support and Service

Our AC LED Module technical support and service includes:

Free technical advice and troubleshooting

24/7 email and telephone support

1-year warranty

Free software updates

Replacement parts and accessories

Packing and Shipping:

Packaging and Shipping for AC LED Module:

The AC LED Module is packed in a box with styrofoam to provide cushioning.

The box is sealed with tape to protect it from dust and moisture.

The box is labeled with the product name, quantity, and other important information.

The box is then placed in a larger box for shipping.

The larger box is secured with tape and labeled with the shipping address.

The package is shipped via a reliable shipping carrier.

Are you still worrying these problem?

Short circuit? Burn out? Poor quality?



Don't worry !

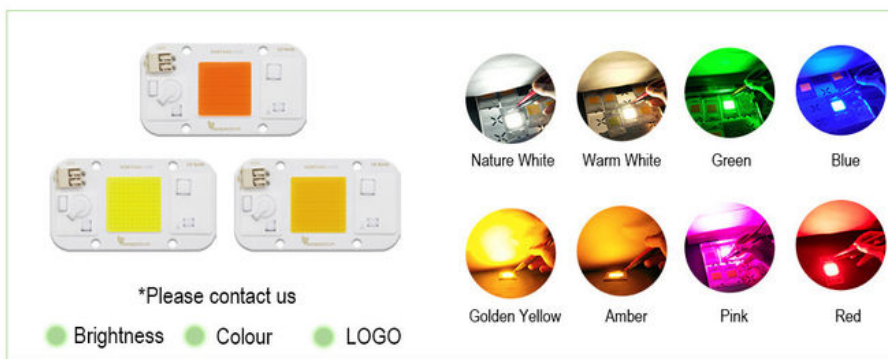
Newspectrum LED CHIP

BENEFIT YOUR LIFE

Full Power High Lumens 4KV Surge Protection Life Guarantee

CUSTOMIZED

Focus on AC/COB 10 Years



Packing



CERTIFICART

Quality Assurance



Why heat dissipation faster?

A4:1.6mm high thermal conductivity aluminum material



Ours



Thickness: 1.6mm



Others



Thickness: 1.0mm

Why is it safer ?

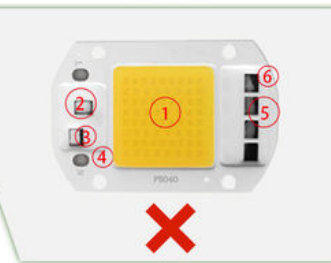
A5:More secure with multiple protections



Ours



Others



Chips are bigger than others	(1)	Ordinary chip
Solderless Connector	(2)	No
Anti-interference device multiple anti surge protection	(3)	No
Mov for surge protection>4000V passed	(4)	Mov for surge protection<1000V passed
1000V bridge rectifier	(5)	500V bridge rectifier
Constant current and constant power control	(6)	Unstable output power current
Driver IC over voltage and current control	(7)	No
NTC sensor for pcb overheat protection	(8)	No

Solderless Connector

A1 : Solderless connector, safe and convenient



Ours



Others



Why is the quality better ?

A2: There are components that other suppliers don't have



Ours



Others



Why is it brighter ?

A3: LED chips 3 times bigger than others



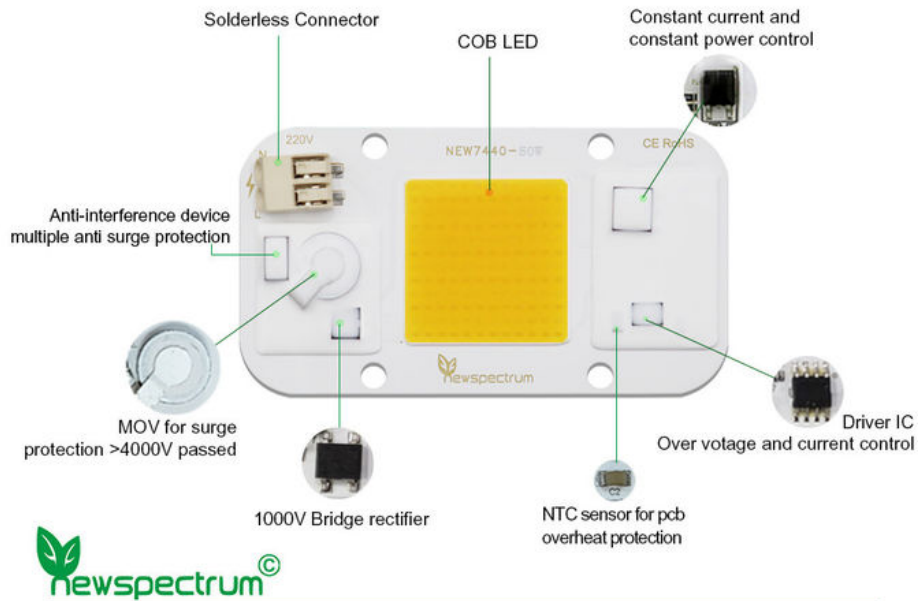
Ours



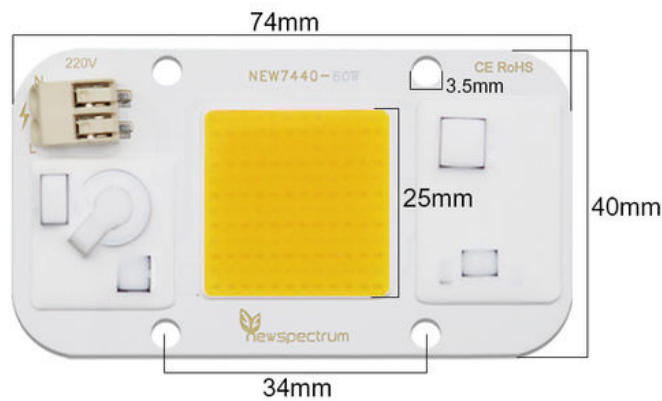
Others



Product Details



• 20W/30W/50W



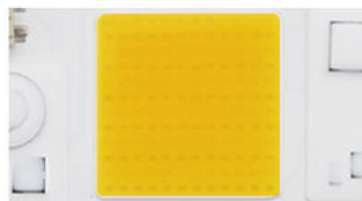
Model	NEW7440-50W	Power	20W/30W/50W
Voltage	AC220V-240V	CCT	3000K
Size	40mm*74mm	CRI	80
Viewing angle	120°	Lumens	100lm/W
Lifespan	50000hrs	Hole diameter	3.5mm
Luminous size	25mm*25mm	Board thickness	1.6mm

Product Features



Intelligent-control circuit
component safe reliable high quality

High quality light-emitting chip
long service life

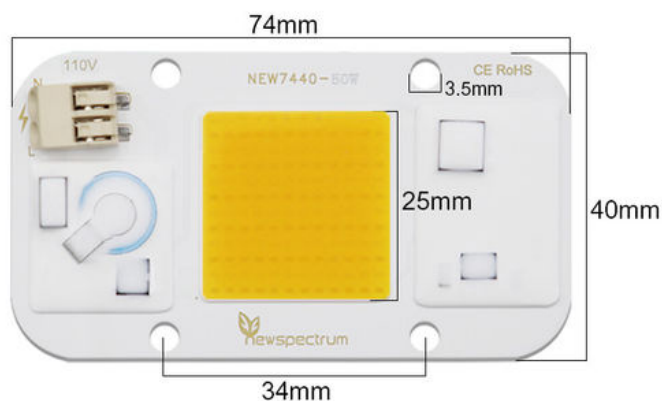


Durable aluminum substrate provide
great heat dissipation effect

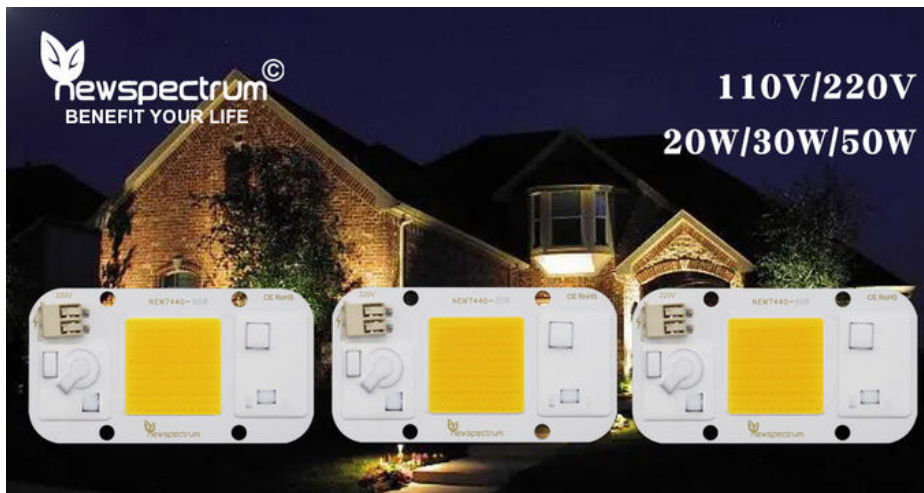
Smart IC chip miniaturization
intelligent extend product's lifespan



● **50W**



Model	NEW7440-50W	Power	50W
Voltage	AC110V-130V	CCT	3000K
Size	40mm*74mm	CRI	80
Viewing angle	120°	Lumens	100lm/W
Lifespan	50000hrs	Hole diameter	3.5mm
Luminous size	25mm*25mm	Board thickness	1.6mm



FAQ:

Q: What is the brand name of the AC LED Module?

A: The brand name of the AC LED Module is newspectrum.

Q: Where is the AC LED Module manufactured?

A: The AC LED Module is manufactured in Shenzhen, China.

Q: What are the features of the AC LED Module?

A: The AC LED Module has high brightness, long life, low power consumption, and low heat generation.

Q: What is the size of the AC LED Module?

A: The size of the AC LED Module is customizable.

Q: What is the voltage range of the AC LED Module?

A: The voltage range of the AC LED Module is 90-265VAC.



Shenzhen Colighting Ltd



+86-18926589891



bon@colighting.com



cobledchip.com

3rd Floor of building 1, No.5 of Shijing Industrial Park, Pingkui Road, Pingshan district, Shenzhen, China, 518118