

## Aluminum DOB LED Module

### Our Product Introduction

for more products please visit us on [cobledchip.com](http://cobledchip.com)

#### Basic Information

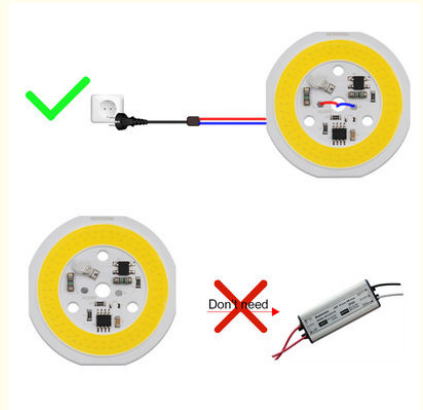
- Place of Origin: Shenzhen China
- Brand Name: DOB LED Module
- Model Number: 55r84
- Minimum Order Quantity: 100pcs
- Price: Negotiable
- Packaging Details: Antistatic bag, boxes in carton.
- Delivery Time: 3-5 workdays
- Payment Terms: L/C, D/A, D/P, T/T, Western Union, MoneyGram
- Supply Ability: 100000pcs/day



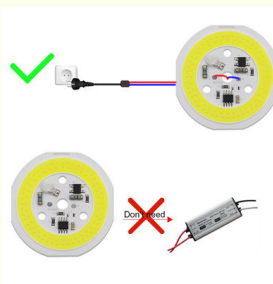
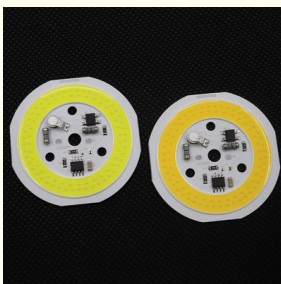
Grow Light 1400K

#### Product Specification

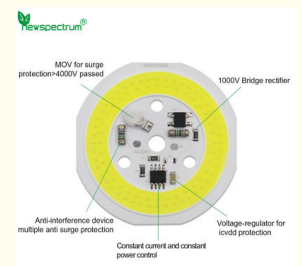
- Color Temperature: 3000K/4000K/6000K
- Power: 9W/12W/15W
- Warranty: 3 Years
- CRI: Ra>80
- Luminous Flux: 3000lm
- Beam Angle: 120°
- Highlight: Aluminum DOB LED Module, 4000K DOB LED Module, Aluminum Chip Led Cob



#### More Images



Voltage	220V-240V		
Power	9W	12W	15W
Diameter	55mm (2.17in)	55mm (2.17in)	55mm (2.17in)
LED Quantity	60pcs	80pcs	80pcs
Chip Size	15*30mils		



## Product Description

### Product Description:

Aluminum DOB LED Module For Lighting Fixtures High Efficiency Model With Long Lifespan

The DOB LED Module is a powerful, durable and efficient lighting solution for a variety of applications. It is equipped with a 9W, 12W or 15W 20W Chip LED, offering superior brightness, high CRI (Ra>80) and a warm white led module. The module is designed to be slim and compact, measuring 300\*300\*10mm, providing a great light output with minimal bulk. The DOB LED Module is designed to provide up to 50,000 hours of reliable, long-lasting illumination, making it an ideal solution for any lighting application. With its powerful 20W Chip LED and superior brightness, the DOB LED Module is sure to provide a bright and reliable lighting solution.

### Features:

Product Name: DOB LED Module

COB LED Chip: 12W Chip LED

Color Temperature: Warm White Led Module

CRI: Ra>80

LED Type: SMD 2835

Material: Aluminum



## Application scenarios



# Product Details



Intelligent-control circuit  
component safe, reliable, high quality

High quality light-emitting chip  
long service life

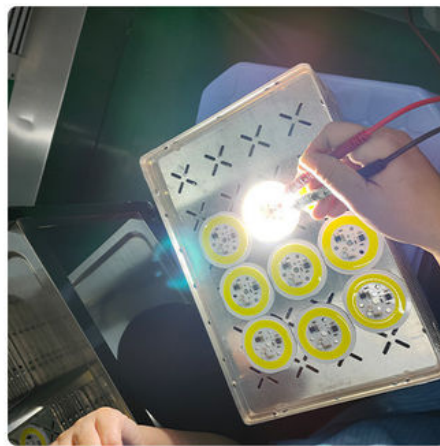
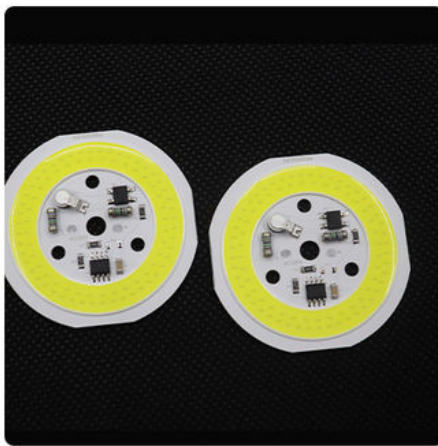
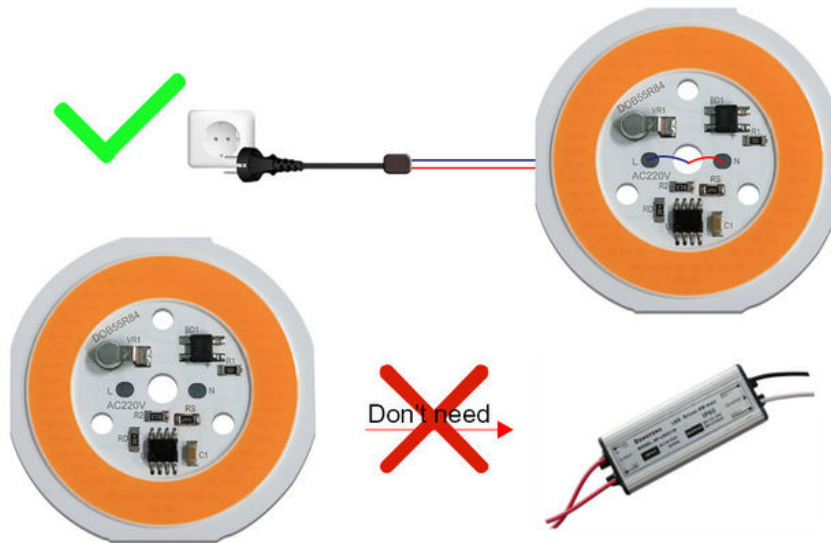


Durable aluminum substrate provide  
great heat dissipation effect

Smart IC chip miniaturization,  
intelligent extend product's lifespan

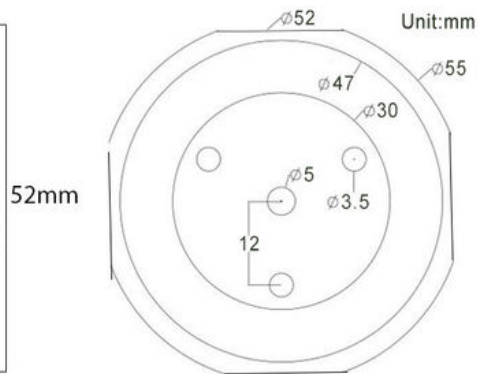
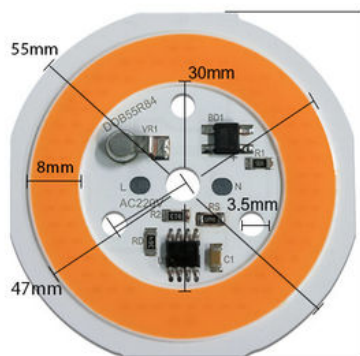
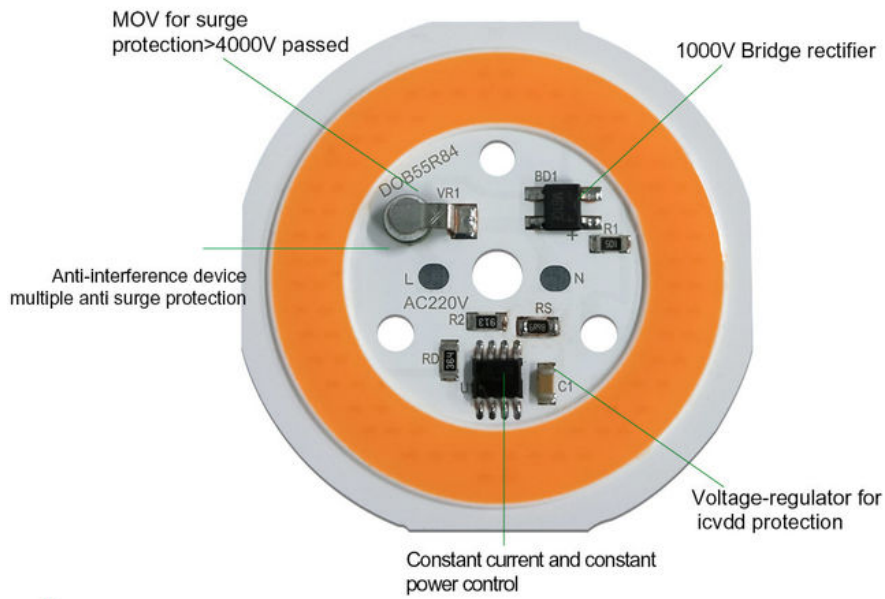


# Smart IC No Driver





# Product introduction



Thickness: 1.5mm



3000K



6000K



6000K

Voltage	220V-240V		
Power	9W	12W	15W
Diameter	55mm (2.17in)	55mm (2.17in)	55mm (2.17in)
LED Quantity	80pcs	80pcs	80pcs
Chip Size	10*21mils		

## Technical Parameters:

Parameters	Value
------------	-------

Power	9W/12W/15W
Voltage	AC220-240V
CCT	1400K
Size	55*54mm
Color Temperature	3000K/4000K/6000K
LED Type	SMD 2835
IP Grade	IP65
Luminous Flux	3000lm
Model	DOB
Lifespan	50,000 Hours
Chip Type	50w Led Cob Chip, 20W Chip LED, Ultra Bright LED, Cool White LED

## Applications:

DOB LED Module – A Perfect Choice for Any Lighting Project

DOB LED Module by Shenzhen China is the perfect choice for any lighting project with its warm white LED Module, full spectrum COB LED, and 50w LED COB chip. Its aluminum material and IP65 waterproof grade make it suitable for indoor as well outdoor lighting applications. With a color temperature of 3000K / 4000K / 6000K and a CRI of Ra>80, you can enjoy an excellent lighting quality without any color distortion.

The DOB LED Module is powered by AC 220-240V, making it a reliable and safe lighting solution. With its wide range of applications, you can use it for commercial, industrial, and residential lighting projects.

## Customization:

DOB LED Module

Brand Name: DOB LED Module

Place of Origin: Shenzhen China

Model: DOB

CRI: Ra>80

Beam Angle: 120°

Luminous Flux: 3000lm

Material: Aluminum

### Highlight Features:

Full Spectrum Cob Led

Warm White Led Module

3000lm

120° Beam Angle

## FAQ:

Q: What is the brand of the DOB LED Module?

A: The brand of the DOB LED Module is **DOB**.

Q: Where is DOB LED Module from?

A: DOB LED Module is from **Shenzhen China**.

Q: What kind of application can DOB LED Module be used in?

A: DOB LED Module can be used in illumination, display screen, advertising signs, etc.

Q: What is the advantages of DOB LED Module?

A: DOB LED Module has high brightness, low power consumption, long lifespan, etc.

Q: What is the size of DOB LED Module?

A: The size of DOB LED Module is **8.5mm\*8.5mm**.



Shenzhen Colighting Ltd



+86-18926589891



bon@colighting.com



cobledchip.com

