

Waterproof Led Light Bar Module

Our Product Introduction

for more products please visit us on cobledchip.com

Basic Information

- Place of Origin: CHINA
- Brand Name: newspectrum
- Model Number: LensG-50W
- Minimum Order Quantity: 100pcs
- Price: Negotiable
- Packaging Details: Antistatic bag, boxes in carton.
- Delivery Time: 3-5 workdays
- Payment Terms: L/C, D/A, D/P, T/T, Western Union, MoneyGram
- Supply Ability: 100000pcs/day



Product Specification

- Power: 110V 220V
- Luminous Flux: 120 LM
- Size: 17cm*11.4cm
- Working Temperature: -20°C~+50°C
- Beam Angle: 120°
- Light Color: Pink
- GW: 0.3kg
- Package: Retail Box
- Highlight: **Waterproof Led Light Bar Module, 110V Led Light Bar Module, Waterproof Light Bar Module**



More Images



Product Description

Product Description:

50000h Lifespan Cob Grow Lights 120° Beam Angle

Light Bar Module is a high-end LED lighting solution that provides optimal illumination for indoor growing. It is designed with a COB LED chip for superior light output and features an ultra slim design, measuring only 6.3*1.2cm. It is lightweight, weighing only 0.3kg, and comes in a retail box with either an EU or US plug for power supply. The plug provides a powerful 12V supply and is perfect for use with COB LED chip based grow lights.

Features:

Product Name: Light Bar Module

Application: Indoor & Outdoor

Working Temperature: -20°C~+50°C

Size: 6.3*1.2cm

Beam Angle: 120°

Waterproof: IP67

COB LED Chip: Yes

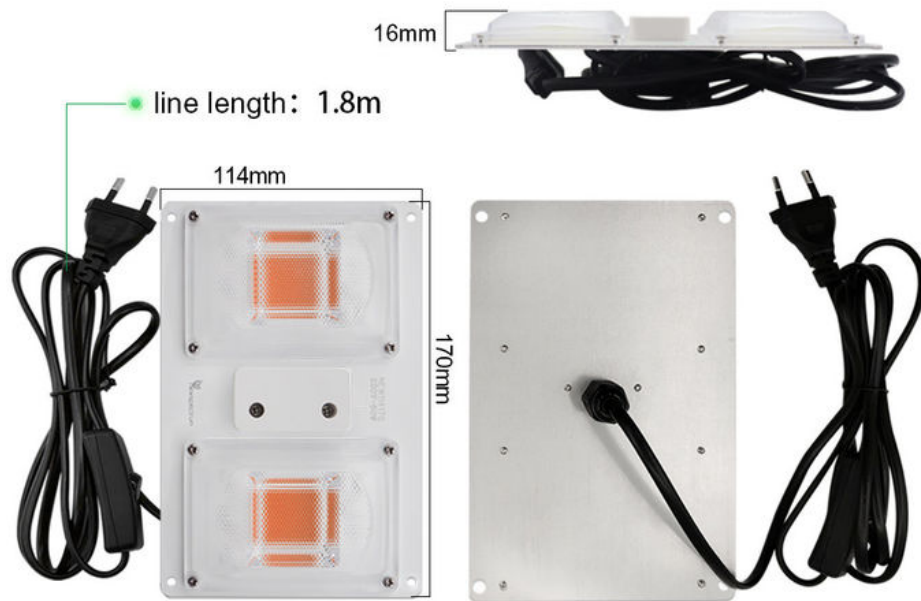
Cob Grow Lights: Yes

Cob Grow Lights Bar: Yes

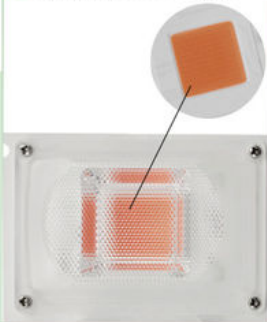
Real Show



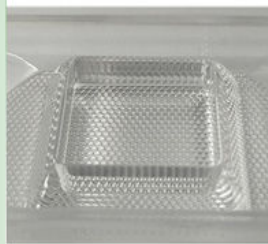
Product listing



● Highlight COB chips



● PC lens waterproof IP65
More uniform light



● Dust & Moisture
Electric shockproof



● Waterproof interface with
rubber plug



● ON / OFF Switch



● Plug EU / US (Optional)



Suitable for all kinds of plants



For Vegetable

For Flowers



For Succulents

For Fruit



Product Details

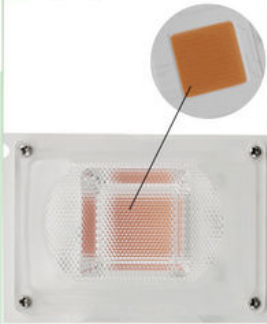


Composition of lamps :

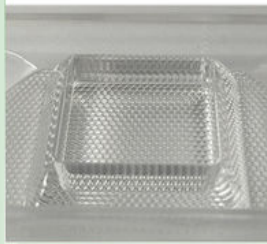
- 1. COB Leds: 2 pcs
- 2. PC Lens: 2pcs
- 3. Power cord cover: 1pcs
- 4. Aluminum Board: 1pcs
- 5. Power cord with switch: 1pcs

line length: 1.8m

Highlight COB chips



PC lens waterproof IP65
More uniform light
Unique mesh surface



Dust & Moisture & Electric shock
proof, Insulation & Beautiful



Waterproof interface with
rubber plug



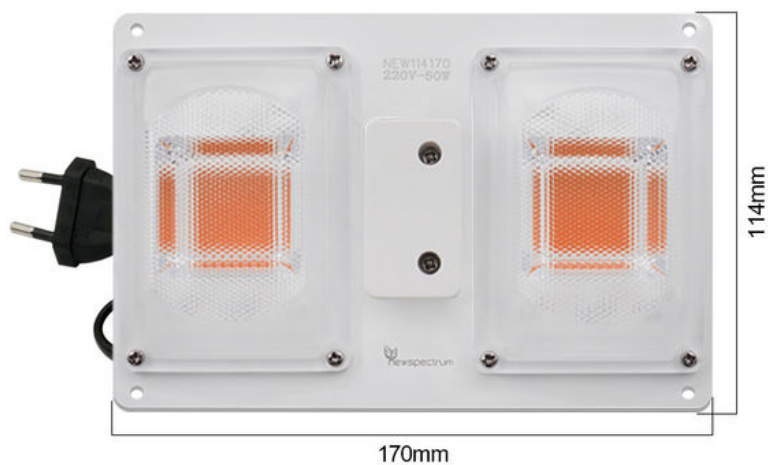
Switch button



Plug selection



50W



| | | | |
|------------------|-----------------------|------------|-------------------|
| Model | Lensboard Grow Light | Power | 50W |
| Voltage | AC220-240V/AC110-130V | CCT | Full spectrum |
| PF | >0.9 | Wave Range | 380-840nm |
| Surge Protection | 4 KV | Lumens | 5000lm |
| Lifespan | 50000hrs | Board Size | 170mm*114mm*1.6mm |

Product Details

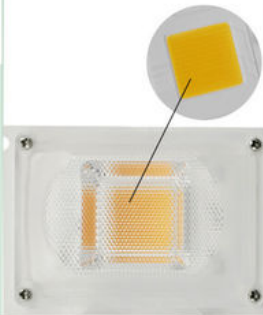


Composition of lamps:

- 1. COB Leds: 2 pcs
- 2. PC Lens: 2pcs
- 3. Power cord cover: 1pcs
- 4. Aluminum Board: 1pcs
- 5. Power cord with switch: 1pcs

line length: 1.8m

● Highlight COB chip



● PC lens waterproof IP65
More uniform light
Unique mesh surface



● Dust & Moisture & Electric
shock proof Insulation Beautiful



● Rubber plug waterproof
interface



● Switch button



● Plug selection



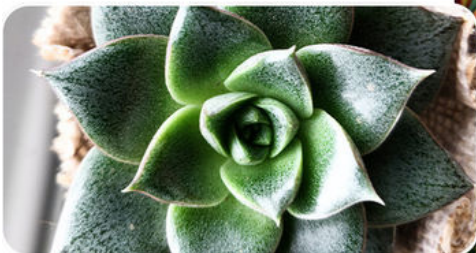
Application

Suitable for all kinds of plants



For Vegetable

For Flowers



For Succulents

For Fruit



Technical Parameters:

| Parameter | Value |
|---------------------------|------------------|
| Type | LED |
| Package | Retail Box |
| Product Name | Light Bar Module |
| Waterproof | IP67 |
| Material | Aluminum |
| Working Temperature | -20°C~+50°C |
| Warranty | 2 Years |
| Lifespan | 50000h |
| Plug Type | EU / US Plug |
| Light Color | White |
| COB LED Chip | Yes |
| Full Spectrum Grow Lights | Yes |
| Waterproof IP67 | Yes |

Applications:

Newspectrum Light Bar Module: The Perfect Full Spectrum Grow Lights for Your Indoor Plant.

Are you looking for the ideal **Full Spectrum Grow Lights** for your indoor plants? Look no further than the Newspectrum Light Bar Module. It's the perfect LED grow light for your indoor plants. This amazing light bar module is made in **China** and comes with a retail box for easy installation and transportation. With a **luminous flux of 120 LM** and a **lifespan of 50000h**, your plants will get the best light possible. Plus, the **white light** is perfect for your indoor plants. With a **GW of 0.3kg**, this light bar module won't add too much weight to your home.

Newspectrum Light Bar Module is perfect for **Cob Grow Lights**, providing the perfect full spectrum of light for your indoor plants.

Customization:

Light Bar Module Customization Service -----

Newspectrum offers a full range of customized services for Light Bar Module. With our high-quality COB LED chip, cob grow lights, and high lumen performance, our light bar modules are of the highest quality.

Place of Origin: CHINA

Package: Retail Box

Power: 12V

Waterproof: IP67

Warranty: 2 Years

Lifespan: 50000h

Support and Services:

Light Bar Module Technical Support and Service -----

We provide a full range of technical support and service for our Light Bar Module products. Our team of experts is available 24/7 to answer any questions or concerns you may have.

We provide a comprehensive warranty with all our Light Bar Module products, ensuring that all parts and components are free from defects. We also offer a repair and replacement service for any defective items.

We offer a wide selection of technical support materials for our Light Bar Module products, including detailed product specifications, installation guides, troubleshooting tips, and more.

We are committed to providing the highest level of customer service and satisfaction. If you ever have any questions or concerns, please don't hesitate to contact us.

FAQ:

Q: What is Light Bar Module? -----

A: Light Bar Module is a product of newspectrum, which is made in China.

Q: What are the features of Light Bar Module?

A: Light Bar Module has the features of high brightness, low power consumption, and long service life.

Q: What is the application of Light Bar Module?

A: Light Bar Module is widely used in indoor and outdoor lighting, such as street lights, floodlights, and decorative lights.

Q: What is the color of Light Bar Module?

A: Light Bar Module is available in white, yellow, red, and green.

Q: What is the warranty for Light Bar Module?

A: Light Bar Module has a one-year warranty from newspectrum.



Shenzhen Colighting Ltd



+86-18926589891



bon@colighting.com



cobledchip.com

3rd Floor of building 1, No.5 of Shijing Industrial Park, Pingkui Road, Pingshan district, Shenzhen, China, 518118