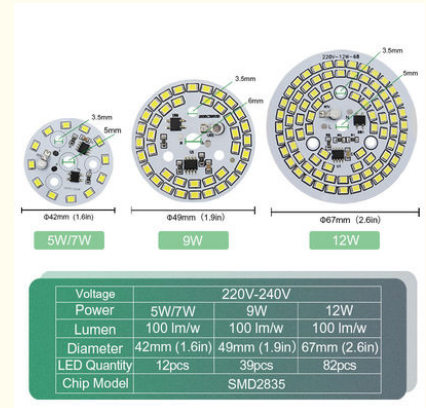


High Brightness 7000K 5W LED COB Smd Bead Chips For Spotlights

Our Product Introduction

Basic Information

- Place of Origin: Shenzhen China
- Brand Name: newspectrum
- Model Number: 2835
- Minimum Order Quantity: 100pcs
- Price: Negotiable
- Packaging Details: Antistatic bag, boxes in carton.
- Delivery Time: 3-5 workdays
- Payment Terms: L/C, D/A, D/P, T/T, Western Union, MoneyGram
- Supply Ability: 10000pcs/day

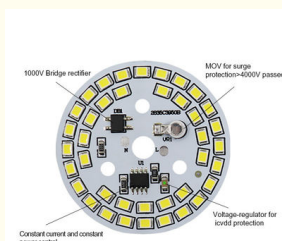


Product Specification

- Viewing Angle: 120°
- Application: Spotlights/ Downlight/ Track Light
- Color Temperature: 6000K
- Power: 5W/7W/9W
- Lifespan: 50,000 Hours
- Storage Temperature: -40°C~+65°C
- Highlight: High Brightness 5W LED COB, Spotlights 5W LED COB, 7000K Smd Bead Chips



More Images



for more products please visit us on cobledchip.com

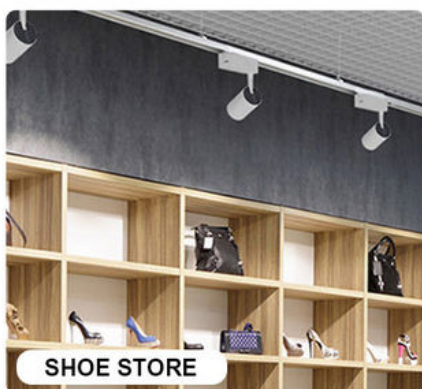
Product Description

Product Description:

SMD LED Chip 220V-240V Wavelength 460nm-465nm

SMD LED Chip is a reliable and efficient lighting solution, designed with high-performance 5W LED COB light source technology. With an operating temperature of -40°C to $+65^{\circ}\text{C}$, it is a highly durable and long-lasting option for lighting applications. Moreover, it has an exceptionally low power consumption of only 0.06W, and a luminous flux of 20-25mcd. It's ultra-small size of $\Phi 42\text{mm}$ also allows for maximum flexibility in terms of design and installation. It is an ideal lighting solution for spotlights, downlight, track light and other applications.

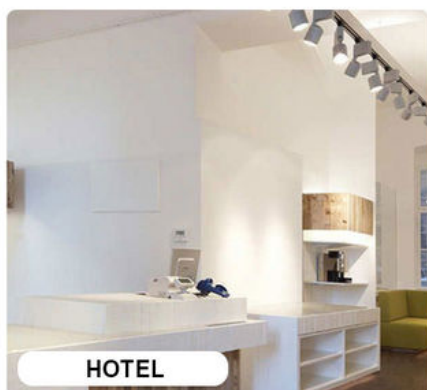
Application scenarios



SHOE STORE



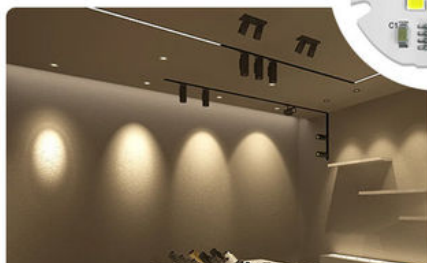
SUPERMARKET



HOTEL

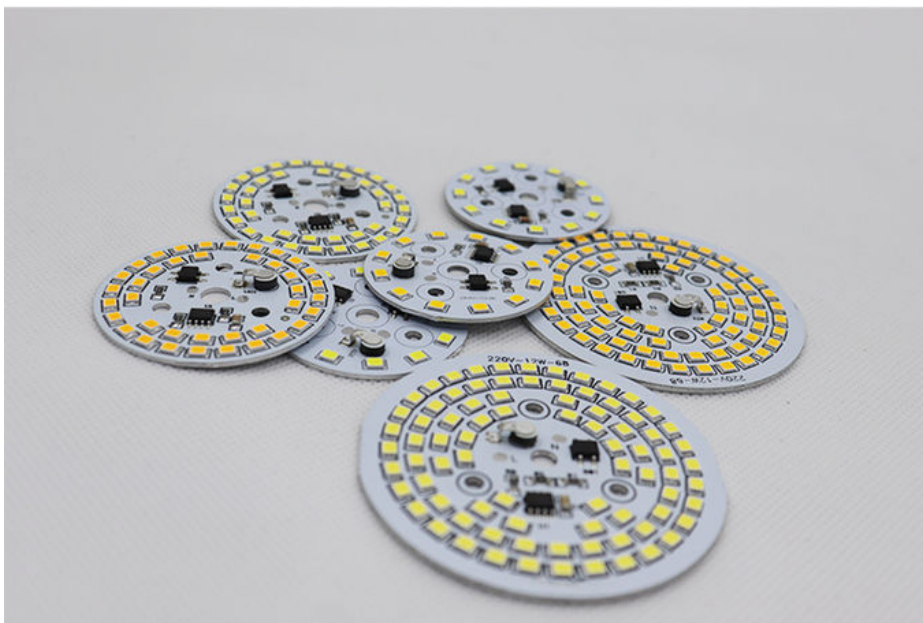
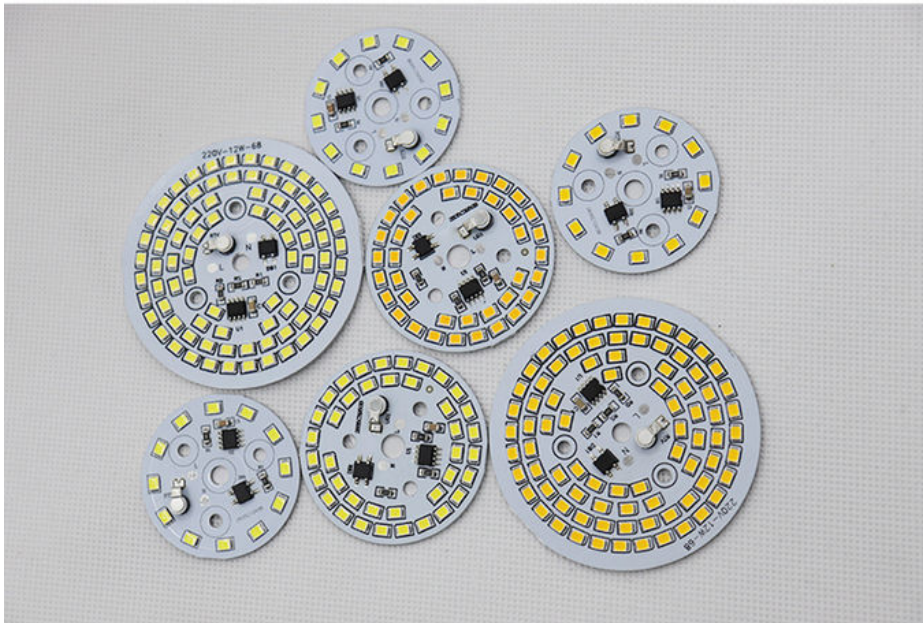


RESTAURANT

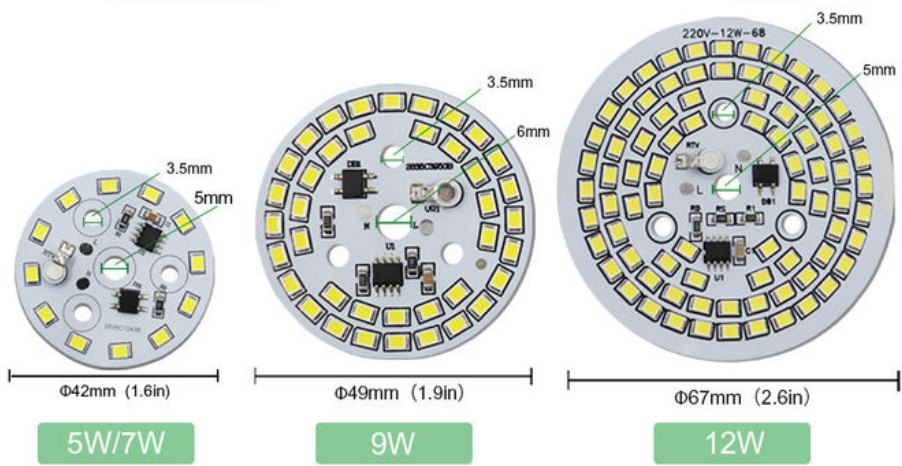




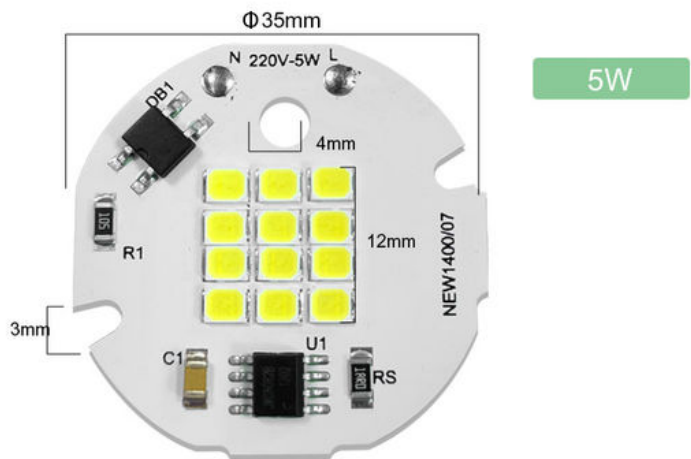
Real Photo



Product Parameter

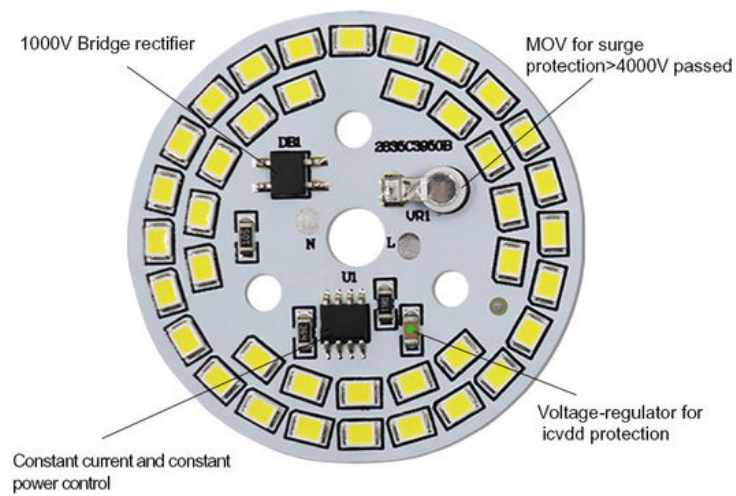
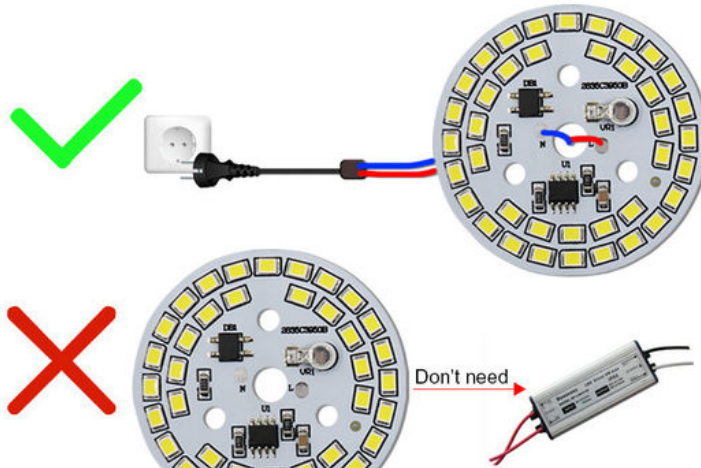


Voltage	220V-240V		
Power	5W/7W	9W	12W
Diameter	42mm (1.6in)	49mm (1.9in)	67mm (2.6in)
LED Quantity	12pcs	39pcs	82pcs
Application	Bulb lamp		



Model	1235A	Power	5W
Voltage	AC220-240V	CCT	3000K/4000K/6000K
Lumens Effect	100lm/w	Application	Downlight/spotlight
Size	Φ35mm	LED Diameter	12mm*12mm

Smart IC No Driver



Why is the quality better ?

A1: There are components that other suppliers don't have



Ours

Others



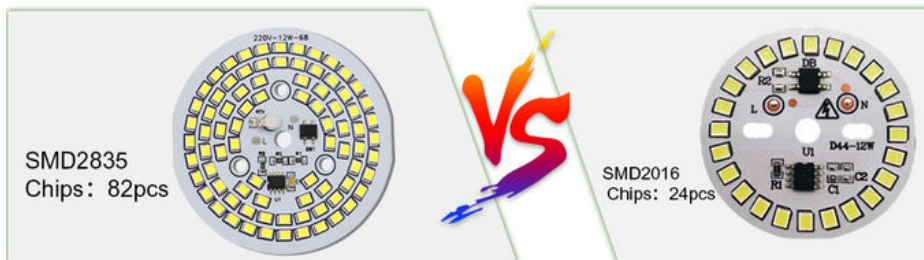
Why is it brighter ?

A2: Newspectrum chip is more and bigger



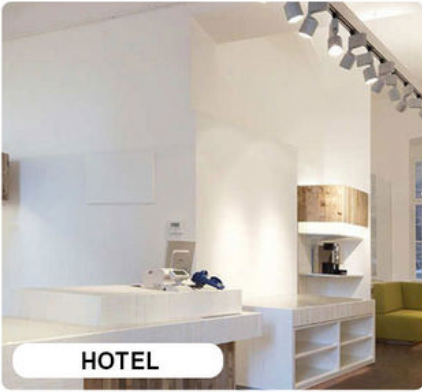
Ours

Others

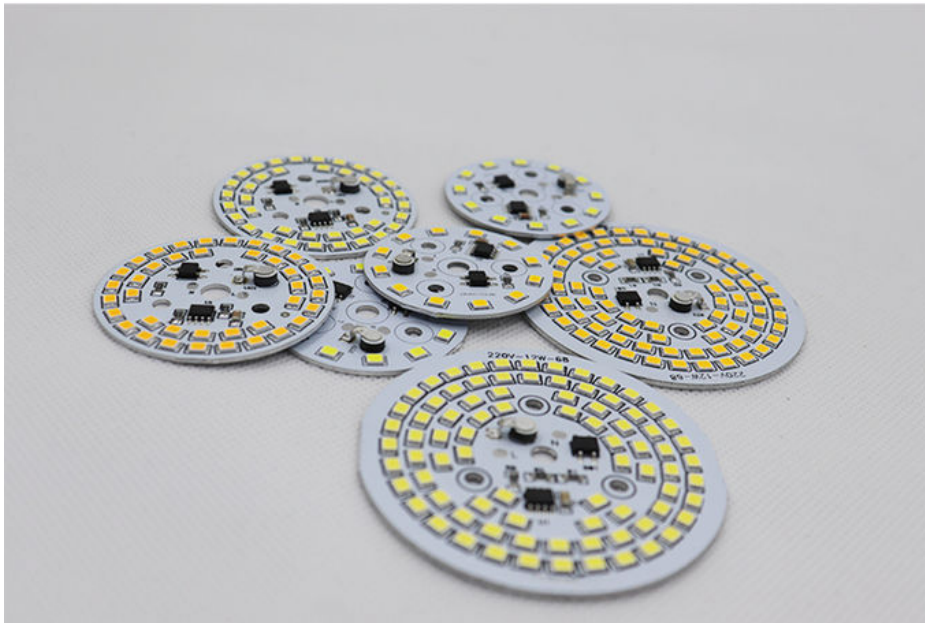
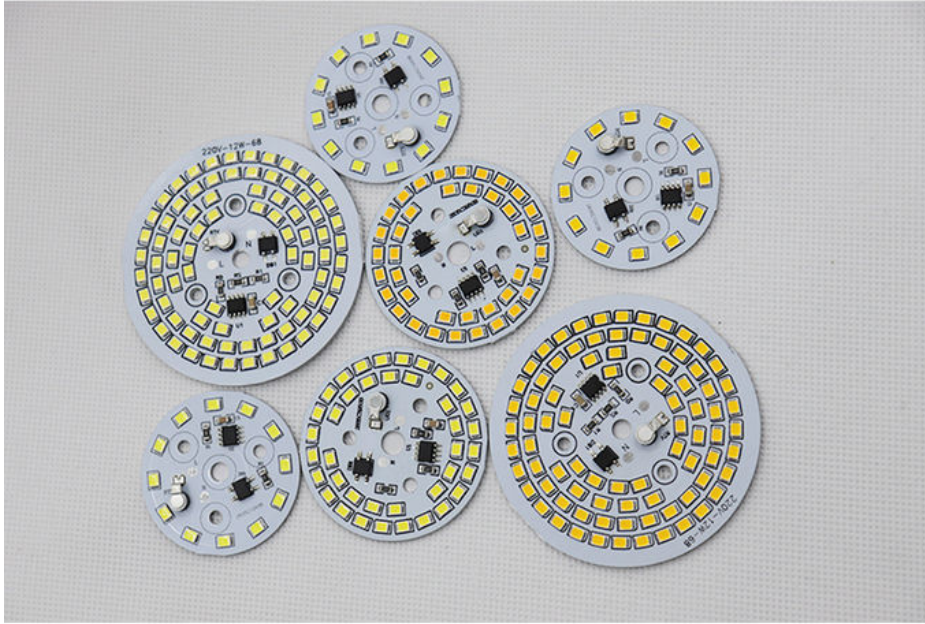


Application scenarios

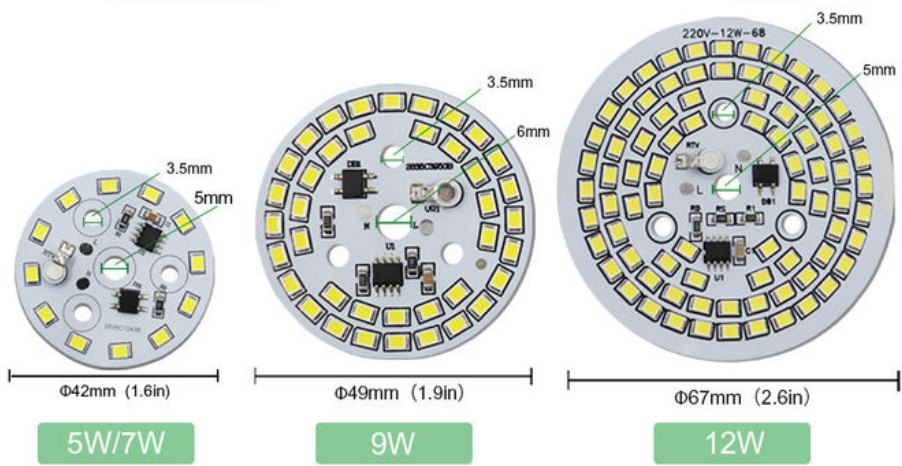




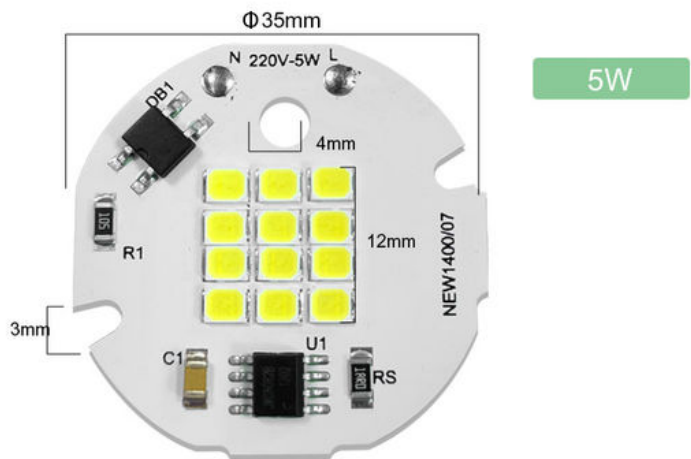
Real Photo



Product Parameter

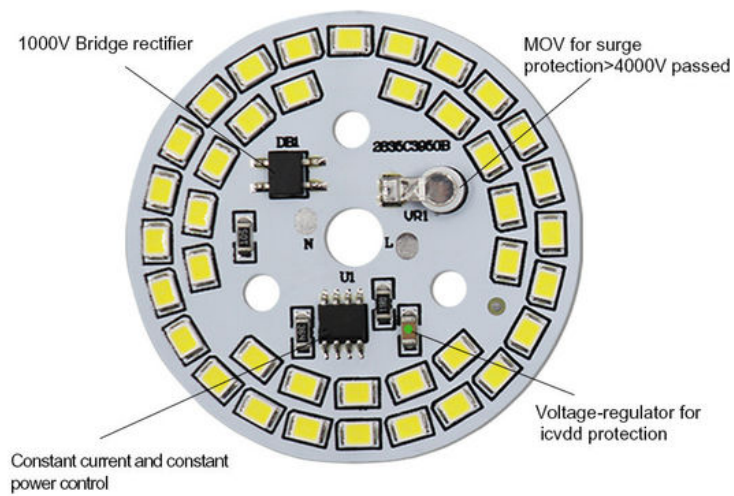
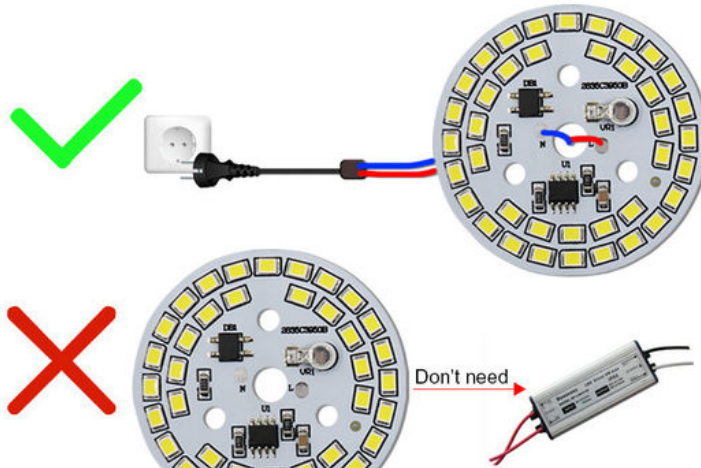


Voltage	220V-240V		
Power	5W/7W	9W	12W
Diameter	42mm (1.6in)	49mm (1.9in)	67mm (2.6in)
LED Quantity	12pcs	39pcs	82pcs
Application	Bulb lamp		



Model	1235A	Power	5W
Voltage	AC220-240V	CCT	3000K/4000K/6000K
Lumens Effect	100lm/w	Application	Downlight/spotlight
Size	Φ35mm	LED Diameter	12mm*12mm

Smart IC No Driver



Why is the quality better ?

A1: There are components that other suppliers don't have



Ours

Others



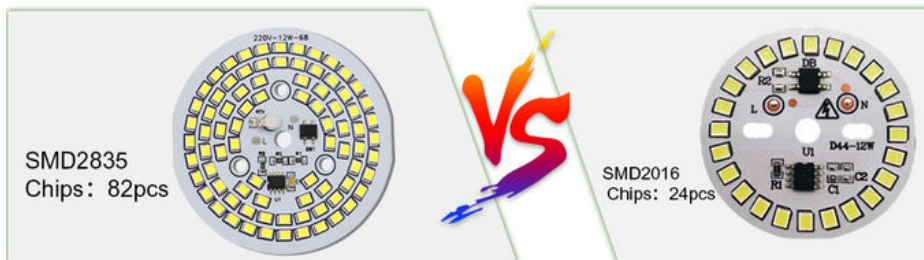
Why is it brighter ?

A2: Newspectrum chip is more and bigger



Ours

Others



Features:

Product Name: SMD LED Chip

Package: Reel

Lifespan: 50,000 Hours

Application: Spotlights/ Downlight/ Track Light

Color Temperature: 6000K-7000K

Luminous Flux: 20-25mcd

5W LED COB: Yes

Chip Cob Led: Yes

Chip Cob Led 5W: Yes

Technical Parameters:

Parameter	Value
Storage Temperature	-40°C~+80°C
Operating Temperature	-40°C~+65°C
Size	Φ42mm
Viewing Angle	120°
Current	20mA
Lifespan	50,000 Hours
Voltage	AC 220V-240V
Color Temperature	6000K-7000K

Applications:

Are you looking for a reliable and efficient Chip Cob LED? Look no further than newspectrum's 5w SMD LED Chip. This product is the perfect choice for any lighting application thanks to its natural white glow color, 70-80 CRI, and operating temperature range of -40°C to +65°C. It is also incredibly small, measuring in at only Φ42mm, and comes packaged on a reel for easy transport and storage. Make newspectrum's 5w SMD LED Chip your go-to choice for all your lighting needs!

Customization:

Our Chip Cob Led SMD LED Chip is made with the highest quality components by Newspectrum in Shenzhen China. This Chip Cob Led SMD LED Chip features a natural white glow, and operates between -40°C~+65°C.

Support and Services:

We provide technical support and services for SMD LED Chip products. Our technical support staff are highly trained and experienced in the LED industry. They can assist you with any questions or issues you may have regarding our SMD LED Chip products. We also provide installation and maintenance services for our SMD LED Chip products. Our trained technicians can help you install and maintain the SMD LED Chip products efficiently and safely. If you have any questions or concerns about our SMD LED Chip products, please do not hesitate to contact us. Our customer service team is always available to help.

FAQ:

Q: What is SMD LED Chip?

A: SMD LED Chip is a type of LED chip produced by newspectrum, a brand based in Shenzhen China.

Q: What are the advantages of SMD LED Chip?

A: SMD LED Chip has many advantages, such as low power consumption, long lifespan, high brightness, and wide operating voltage.

Q: What is the size of SMD LED Chip?

A: The size of SMD LED Chip is Φ42mm.

Q: Can I customize the color of SMD LED Chip?

A: Yes, SMD LED Chip is available in different colors such as red, green, blue, yellow, and white.

Q: What is the warranty of SMD LED Chip?

A: We provide a 2 years warranty for our SMD LED Chip products.



Shenzhen Colighting Ltd



+86-18926589891



bon@colighting.com



cobledchip.com

3rd Floor of building 1, No.5 of Shijing Industrial Park, Pingkui Road, Pingshan district, Shenzhen, China, 518118